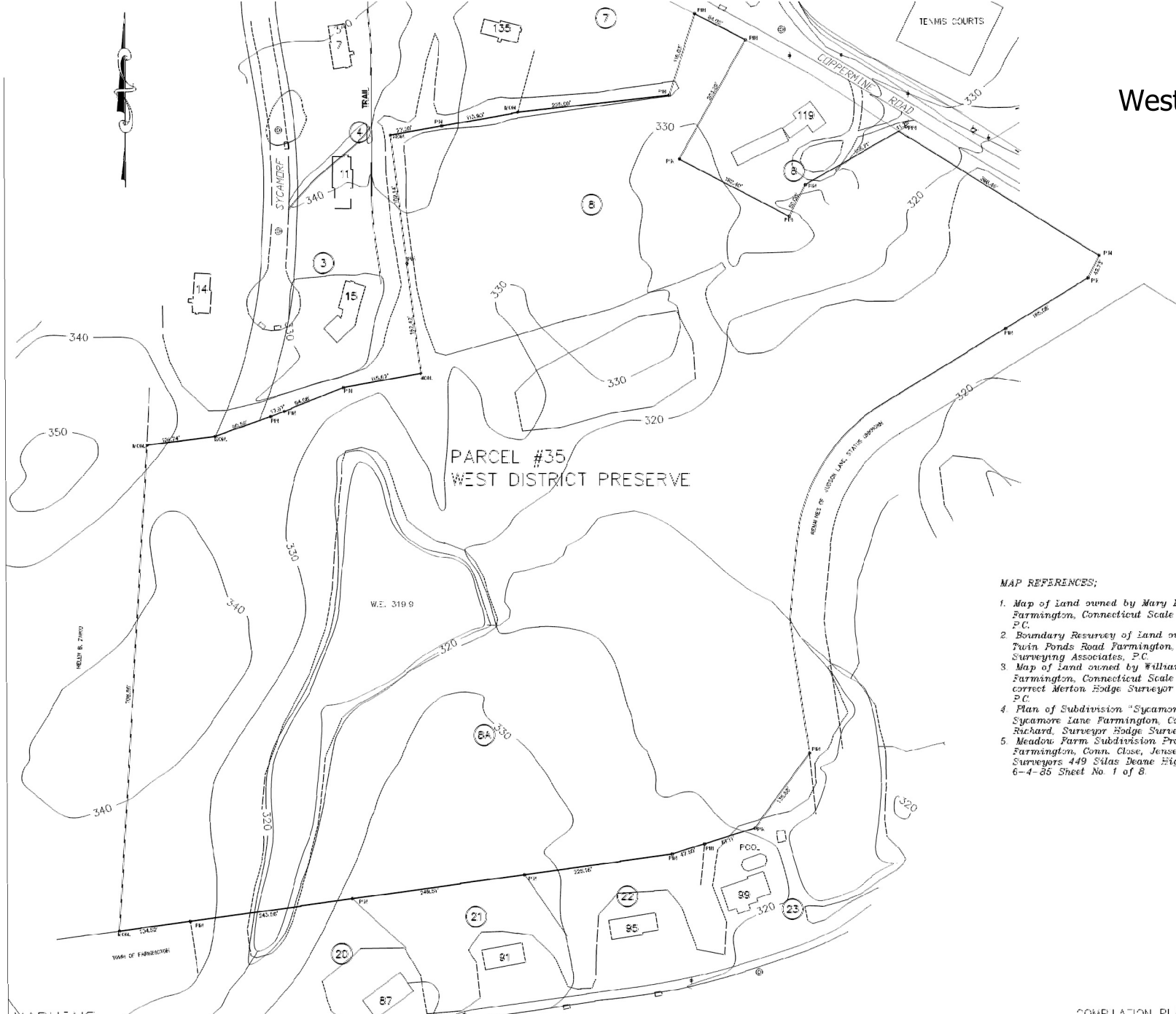


West District Survey Map 3



PARCEL #35
WEST DISTRICT PRESERVE

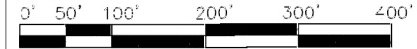
MAP REFERENCES:

1. Map of Land owned by Mary E. Bushley & Ruth B. Childs Coppermine Road Farmington, Connecticut Scale 1"=40' April 1995 Hodge Surveying Associates, P.C.
2. Boundary Resurvey of Land owned by Helen B. Zaiko Coppermine Road & Twin Ponds Road Farmington, Connecticut Scale 1"=100' April 1998 Hodge Surveying Associates, P.C.
3. Map of Land owned by William D. and Carlene R. Halliday Coppermine Road Farmington, Connecticut Scale 1"=40' January 1954 certified substantially correct Merton Hodge Surveyor Revised October 1970 by Hodge Surveying Associates, P.C.
4. Plan of Subdivision "Sycamore Acres" Micheline B. Carrier Coppermine Road & Sycamore Lane Farmington, Connecticut Scale 1"=40' December 1990 Francis A. Richard, Surveyor Hodge Surveying Associates, P.C.
5. Meadow Farm Subdivision Property of R.W.R. Enterprises et al Red Oak Hill Road, Farmington, Conn. Close, Jensen & Miller Consulting Engineers, Land Planners & Surveyors 449 Silas Deane Highway Weathersfield, Connecticut 06109 Revised to 6-4-85 Sheet No. 1 of 8.

REVISED: MAY 2000

WARNING
This plan prepared from aerial survey data provided by the Town of Farmington and other sources of information. It is not to be construed as having been obtained as the result of a field survey, and is subject to such change as an accurate field survey may disclose.

THIS COMPLETION SURVEY MAP CONFORMS TO CLASS D IN ACCORDANCE WITH THE MINIMUM STANDARDS FOR SURVEYS AND MAPS IN THE STATE OF CONNECTICUT AS ADOPTED FOR USE BY THE STATE OF CONNECTICUT ON SEPTEMBER 26, 1995.
TO MY KNOWLEDGE AND BELIEF THIS MAP IS SUBSTANTIALLY CORRECT AS NOTED - HEREON.



GRAPHIC SCALE

COMPLETION PLAN
PARCEL #35, WEST DISTRICT PRESERVE
LAND OWNED BY
FARMINGTON LAND TRUST
COPPERMINE ROAD
FARMINGTON, CONNECTICUT
SCALE 1"=100' JANUARY 1999
HODGE SURVEYING ASSOCIATES, P.C.